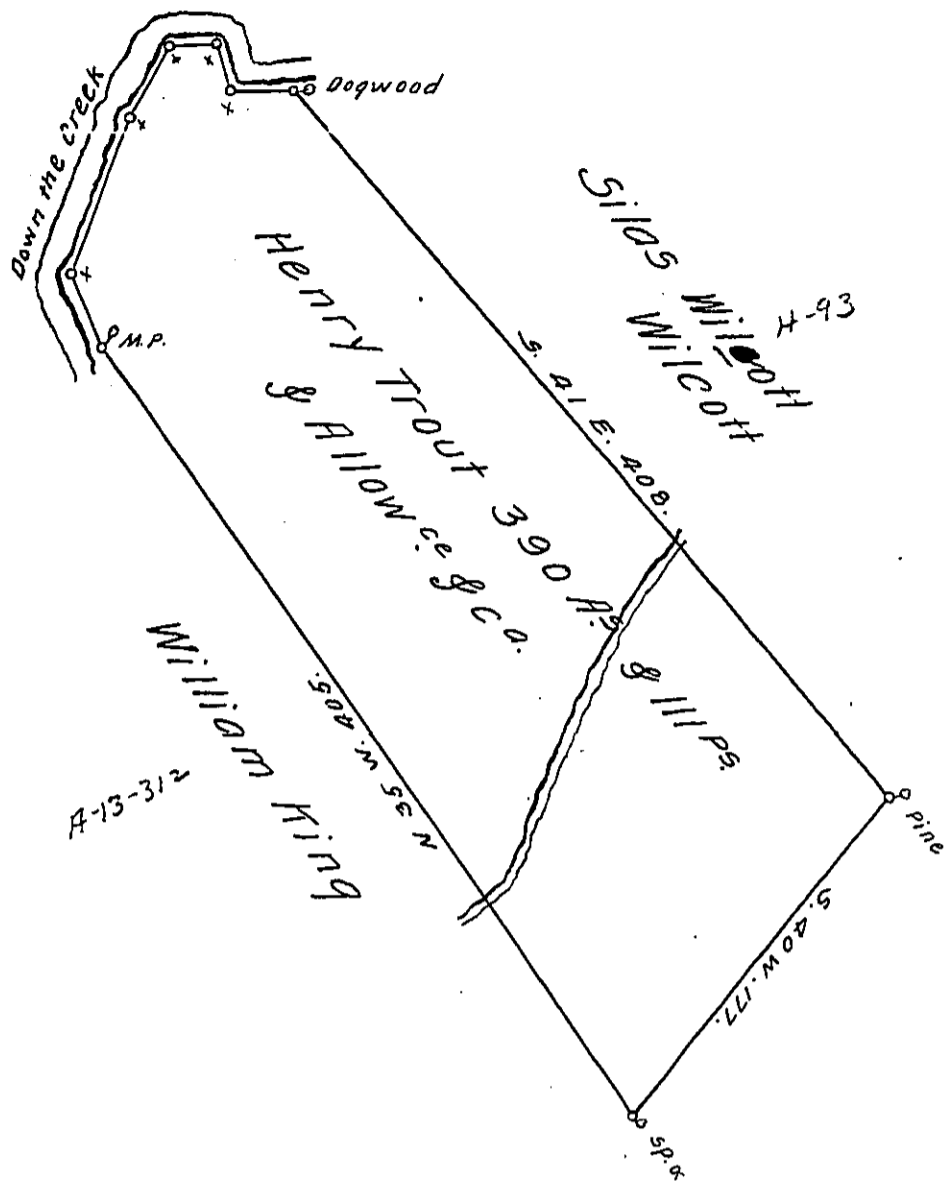


Courses down the Creek

- N 22 W 32
- N 10 E 70
- N 29 E 34
- N 84 E 20
- S 16 E 20
- S 87 E 36
- 212'



Draught of a Tract of Land situate on the Waters of Clear Field Creek in the County of Bedford. Containing three hundred and Ninety Acres & one hundred and eleven perches & the Usual Allowance of Six p^r Cent for Roads &c^a. Surveyed for Henry Trout June 8th 1785. In Pursuance of a Warrant Dated July 8th 1784.

George Woods D.S.

To John Lukens Esq^r S.G.

IN TESTIMONY that the above is a copy of the original remaining on file in the Department of Internal Affairs of Pennsylvania, made conformably to an Act of Assembly approved the 16th day of February, 1833, I have hereunto set my Hand and caused the Seal of said Department to be affixed at Harrisburg, this twenty fourth day of July 1911.

Mary Howell
Secretary of Internal Affairs.